



CELEBRATING 50 YEARS OF DEDICATED SERVICE TO OUR VALUED CUSTOMERS
7/5/1969 - 7/5/2019





Left page

Top left: The production of custom pallets supplements our automated manufacturing of standard pallets.

Top right: Edwards' foresters track timber growth, manage quality and help replenish harvests with new plantings.

Bottom: To control our response time, we operate and maintain a fleet of more than 90 trucks.

Right page (top to bottom):

Forester takes sample plot

Grade logs being transported to sawmill

Crane loading logs into our Pole mill operation

Edwards Wood Products is one of the fastest growing pallet manufacturers, grade lumber and crane mat suppliers in the US and abroad.

To support our production and to better serve our customers, we operate 3 companies and 7 locations with headquarters in Marshville, North Carolina:

Edwards Wood Products Inc.
Edwards Timber Company Inc.
Edwards Wood Products Inc. Transporation

Edwards Wood Products

Edwards Wood Products, established in 1969 by Carroll Edwards, as a small pallet manufacturing facility has grown over the years into one of the largest manufacturers of pallets, cross ties and grade hardwood lumber in the southeast—manufacturing 125,000 pallets and over 4,000,000 board feet of grade hardwood/softwood lumber per week. Edwards Wood Products business has always been built upon strong values: dedication to family and customers, hardwork, integrity, the power of a handshake and the value of the dollar.

Edwards operates three companies in seven locations : a timber company to buy land, harvest and replant trees; sawmills and manufacturing facilities for pallet, lumber and crane mat production; a trucking company and separate mills for the production of cants and grade lumber.



Our pole mill operation is able to produce the quality and quantity of wood needed to support our pallet manufacturing facilities. Our team of foresters manage and harvest timber from areas throughout the Carolinas. In addition, we manufacture chips for the paper industry and produce mulch for landscaping applications.

We employ twelve foresters whose job it is to procure timber to support our manufacturing operations. Our foresters monitor harvesting operations to ensure that "Best Management Practices" are being followed and that natural growth is encouraged.





Left page

Top left: Our automated lines rely on cutting-edge technology.

Top right: Associate feeds lumber into an automatic nailing machine

Bottom left: We also produce custom pallets in accordance with stringent customer specifications.

Bottom right: The Viking nailing system positions lumber, shoots nails and sends a constant stream of finished product to the loading docks.

The Production of Pallets

Edwards Wood Products employs over 700 associates and operates 15 automated pallet manufacturing lines, a pallet recycling department, and two pallet heat treating units to meet the growing demand for pallets. From initial visit, through pallet design, manufacturing and delivery, let Edwards Wood Products solve all of your pallet and material handling needs.

By beginning with a better grade of lumber we produce a better product. We currently build hundreds of different pallet specifications.

Our state-of-the-art equipment is finely tuned by our engineers to enhance speed and performance. As a result, our quality and construction continues to set the standard for the industry.



We have earned a position of leadership in the production of quality pallets.

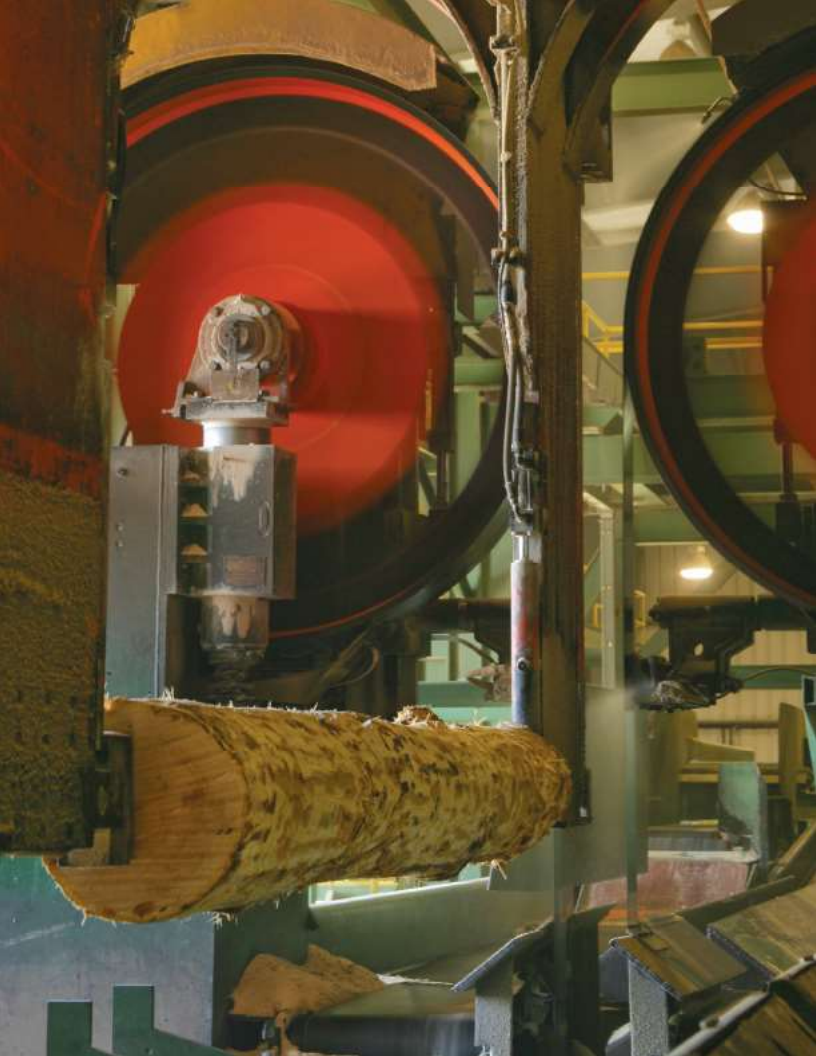
Edwards Wood Products serves a variety of businesses from the manufacturing of tools and household products to plastics, paper and numerous other industries. One of our greatest strengths is the diversity of customers who purchase our products.



The Transportation Division takes great pride in its record of "on-time delivery"

Our goal is to produce the highest quality products and offer quick, dependable service for our customers. Our fleet of over 90 trucks cover the southeast from Virginia, the Carolinas, Georgia and Florida.





Left page

Top left: Hardwood logs are debarked in preparation for sawmill production.

Top right: The Maxi Mill or primary saw breaks the log into cants.

Bottom left: The Headrig is a double cut bandsaw that works in conjunction with a USNR LASAR scanner and Optimizer to assist operators in cutting to produce the greatest yield.

Bottom right: Lumber is moved through the mill on an automated conveyor system and is graded based on NHLA grading rules.

Right page (top to bottom):

Logs are hewn into cants.

Every log is scanned with our LASAR 2 scanning system to ensure maximum yields.

Edwards Wood Products has invested millions of dollars in technology systems over the past years to improve yield.

Lumber for the Global Market

Edwards Wood Products operates hardwood/softwood sawmills for the production of export and domestic quality grade lumber at four recently updated North Carolina locations and one South Carolina location. Our sawmills process over 800,000 board feet per day of quality grade lumber. Species include Red and White Oak, Poplar, Gum, Maple, Ash, Cypress and Southern Yellow Pine which will be exported throughout the Americas, Europe and the Far East. Thicknesses include 4/4 and 5/4 in Red and White Oak, 4/4, 5/4, 6/4, 8/4 in Poplar, 4/4 and 5/4 in Gum and Ash, 4/4 in Cypress and 4/4 and 5/4 in Southern Yellow Pine..

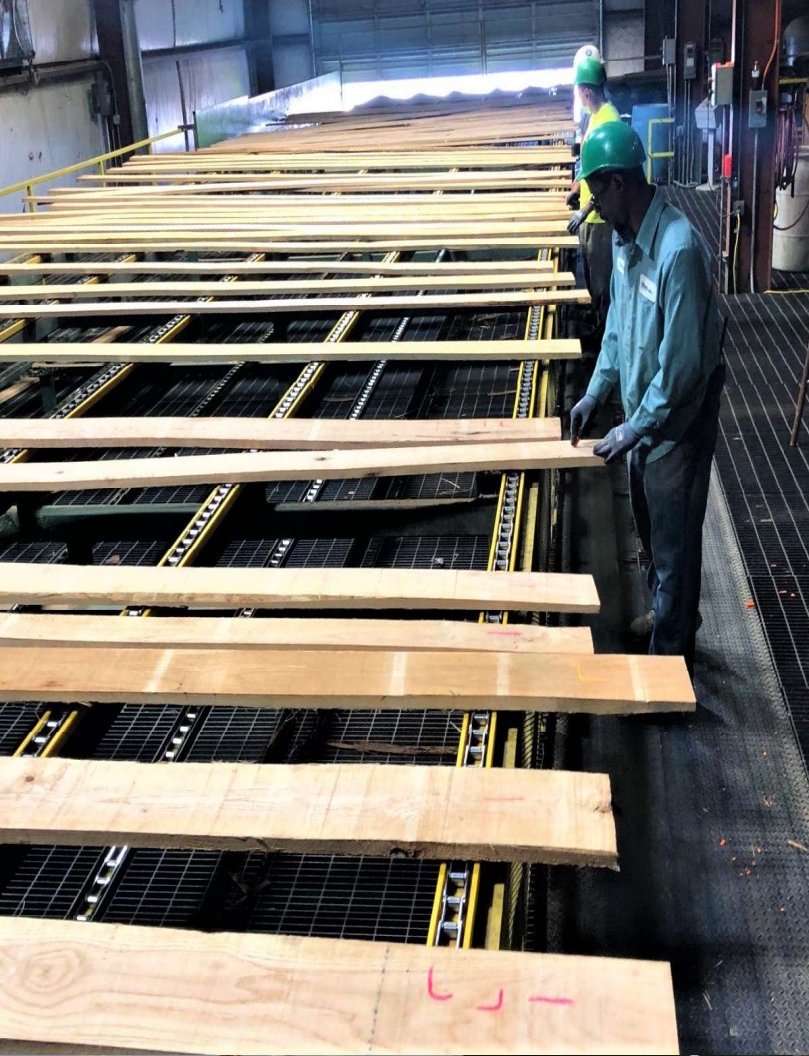
Logs move to the sawmill through a ring debarker and then to a headsaw and Maxi Mill that saws the logs into cants. Every phase of production from sawing and edging to end trimming is computer controlled to maximize yield and minimize waste.



Safety is top priority.

Edwards Wood Products operates the only North Carolina sawmills*, certified by the NCDOL Safety and Health Achievement Recognition Program (SHARP), recognized for exemplary employer safety systems and performance.

* Safety certification is documented at the date of publication.



Left page

Top left: Certified graders inspect and grade every board we process.

Top right: Our NHLA Certified graders participate in monthly training/development sessions to ensure the best yield and quality for every board.

Bottom left: Computer controlled kilns reduce moisture content at rapid speed

Bottom right: Lumber is bundled in preset lengths with an automated stacking system.

Planing, Grading and Curing

Every board Edwards Wood Products processes is evaluated for structure and appearance according to National Hardwood Lumber Association (NHLA) grading rules and in conformance with the American Lumber Standard Committee. Graded green lumber is dried and then travels by conveyor through a high speed multisaw trimmer where it is cut into standard lengths. Boards are automatically sorted by thickness, width and grade, and bundled to computerized specifications for shipping.

Our dry kiln operation began in 1994 with 400,000 board feet of kiln capacity, and has expanded to 3 drying locations with over 1,700,000 board feet of dry kiln capacity and 1,400,000 board feet of predrying capacity. Hurst boilers use our own sawdust as fuel to provide the heat source for the kilns and predryer.



Edwards Wood Products is a global supplier of quality hardwoods/ softwoods used in such applications as: doors, cabinets, mouldings, furniture and flooring.



Global Distribution

Once our lumber is dried to its required moisture content, it is reinspected, trimmed and packaged. At this point the lumber is ready to be shipped by truck, rail or containers to foreign and domestic markets for use in furniture, flooring, cabinets or molding manufacturing.





Top left: Grade logs in storage

Top right: Chips are produced for sale to the paper industry.

Bottom left: Mulch is used in landscape applications.

Bottom right: Sawdust, a by-product of our mills, is used to fuel our boiler.

No Part of the Tree is Unused

In the daily process of manufacturing lumber no part is wasted. The grade logs are cut into boards to be sold as grade lumber. The cores are used for pallet material, bark is sold as mulch for landscaping, the chips for paper, and sawdust fuel for our kilns.



With the addition of wet decks, we are able to control our grade log and pallet wood inventory.

Our system of man-made lakes and irrigation equipment helps us maintain an increased inventory of raw material while preserving the quality of our wood.

Our wet decks make the production of our lumber and pallets less vulnerable to shortages brought on by gaps in the harvest season due to weather conditions.





*Edwards Wood Products
Marshville, NC
Sawmill, Pallet Operation
and Dry Kilns,*

- Produces over 1,000,000 board feet of quality grade lumber per week
- Species consist of Ash, Maple, Red Oak, White Oak, Poplar, Southern Yellow Pine and Mixed Hardwoods
- Produces over 125,000 pallets with hundreds of different specifications per week
- 1,000,000 board feet Dry Kiln capacity
- 1,400,000 board feet Predryer capacity



*Edwards Wood Products
Peachland, NC
Sawmill and Dry Kilns*

- Produces over 800,000 board feet of quality grade lumber per week
- Produces over 1,100 Crane and Bridge Mats per week
- 225,000 board feet of Kiln Capacity
- Species consist of Ash, Maple, Red Oak, White Oak, Poplar, Southern Yellow Pine and Mixed Hardwoods

Edwards Wood Products Liberty, NC Sawmill

- Produces over 1,000,000 board feet of quality grade lumber per week
- Species consist of Ash, Maple, Red Oak, White Oak and Poplar



Edwards Wood Products Liberty, NC Dry Kilns

- Produces over 650,000 board feet of kiln dried quality grade lumber per week
- 650,000 board feet of Kiln capacity
- Species consist of Ash, Maple, Red Oak, White Oak and Poplar





Edwards Wood Products Laurinburg, NC Sawmill

- Produces over 1,650,000 board feet of Southern Yellow Pine and Mixed Hardwoods per week
- Species consist of Poplar, Sap Gum, and Southern Yellow Pine



Edwards Wood Products Laurinburg, NC Pallet Operation

- Produces over 500,000 board feet of Southern Yellow Pine and Mixed Hardwood for our Pallet Production





Edwards Wood Products Manning, SC Sawmill

- Produces over 225,000 board feet of quality grade lumber per week
- Species consist of Cypress, Ash, Maple, Red Oak, White Oak and Poplar









Jeff Edwards, President/CEO

Building Products, Integrity and Relationships since 1969.

Edwards Wood Products is a family owned and operated business. Our growth is driven by the desire to improve service, quality and delivery.



Pallets with Hundreds of Different Specifications

Wood Chips for Paper Manufacturing

Wood Mulch for Landscaping and Playground Applications

Wood Crane Mats for Industrial Worksite Applications

Grade Lumber for the Foreign and Domestic Furniture, Cabinet, Moulding and Flooring Markets

Recycled and Remanufactured Pallets for Multiple Industries

To find out how Edwards Wood Products can meet your pallet, lumber or wood product needs, call us today at 704-624-5098 or visit us at www.ewpi.com.



www.ewpi.com

PO Box 219 Marshville, NC 28103-0219 • Phone: (704) 624-5098 • Fax: (704) 624-6812

3231 Staley Store Road, Liberty, NC 27298 • (336) 622-7537 • Fax: (336) 622-7839

9979 Old Liberty Road, Liberty, NC 27298 • (336) 622-4901 • Fax: (336) 622-3686

3467 Hwy 301 North, Manning, SC 29102 • (803) 473-4868 • Fax: (803) 473-4869

160 Pulpwood Yard Road, Peachland, NC 28133 • (910) 276-6870 • Fax: (910) 276-4815

PO Box 21527 Laurinburg, NC 28353-1527 • (910) 276-6870 • Fax: (910) 276-4815

13421 North Rocky Ford Road, Laurinburg, NC 28353-1527 • (910) 277-1109

Transportation—PO Box 249 Marshville, NC 28103-0249 • (704) 624-3270 • Fax: (704) 624-3377